

**SAFECARE**

*Integrated cyber-physical security for health services*

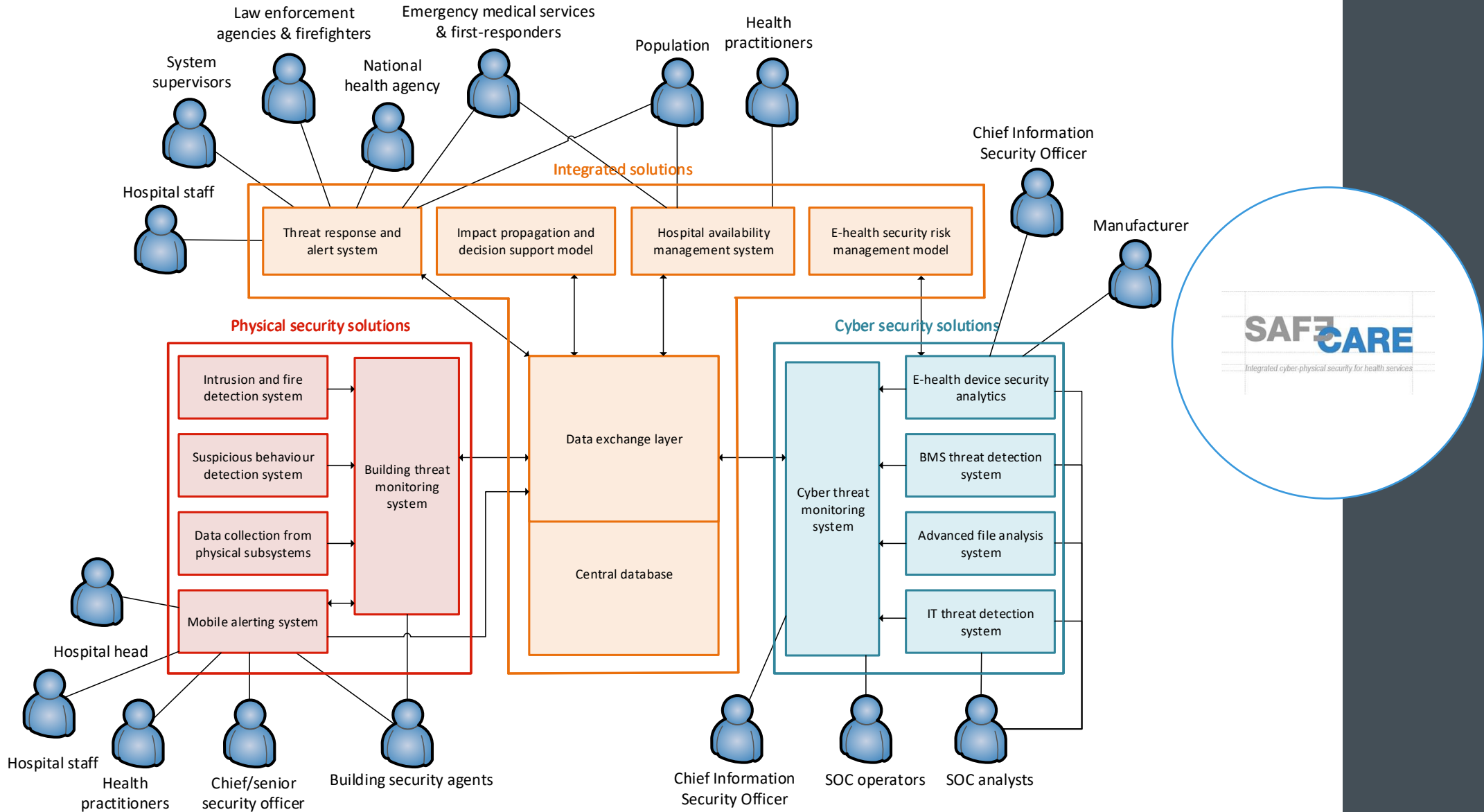
**AIRBUS**

# SAFECARE architecture

---

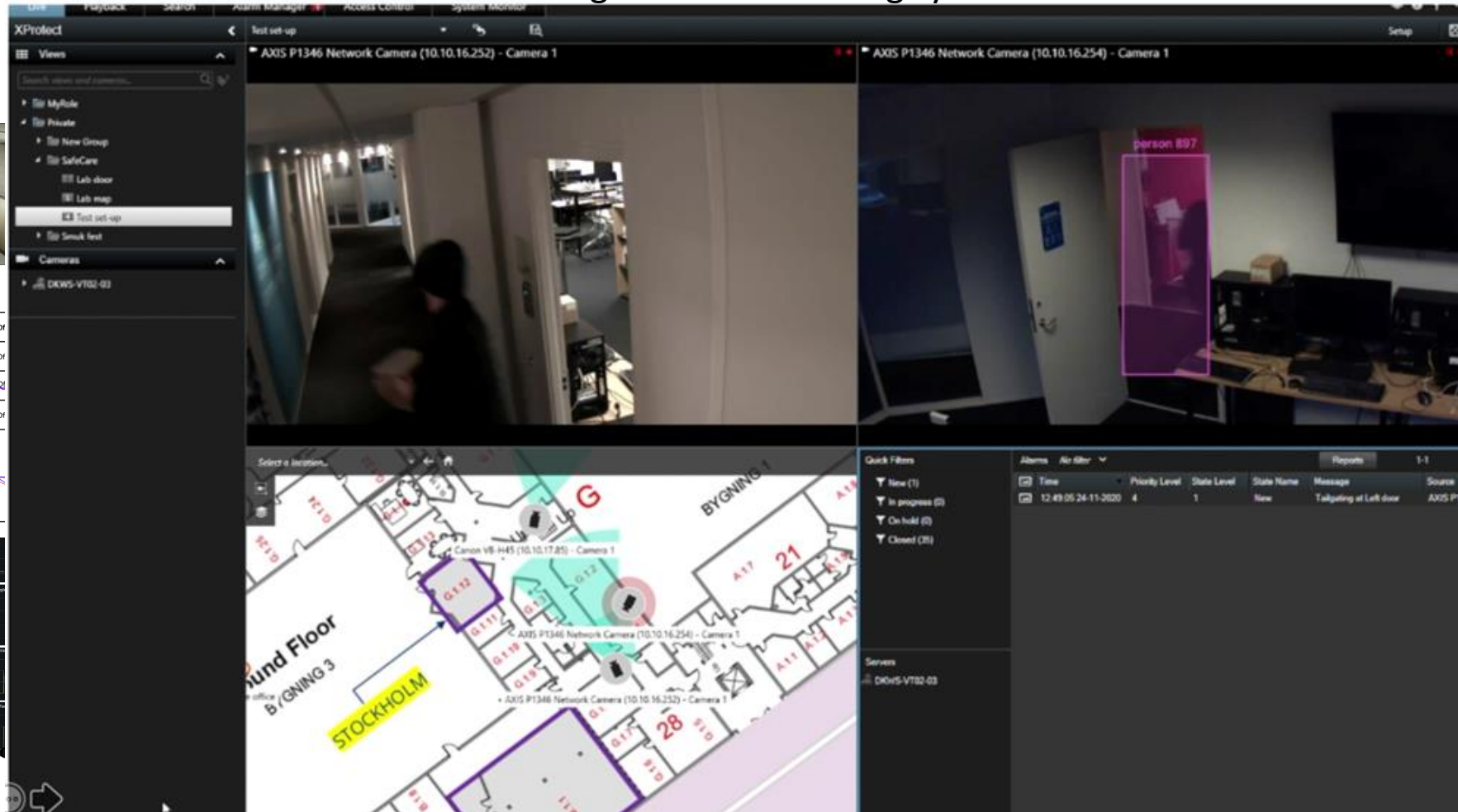
David Lancelin  
AIRBUS CYBERSECURITY

# Overall architecture



# The role of each tool – Physical security solutions

Intrusion Mobile detection system  
Building threat monitoring system



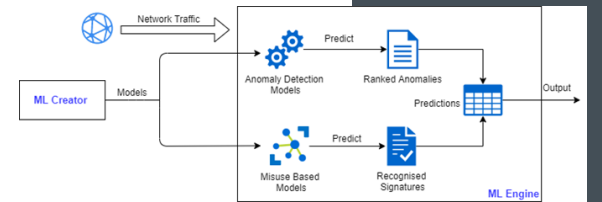
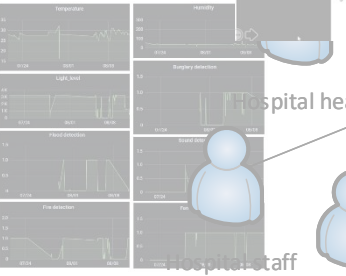
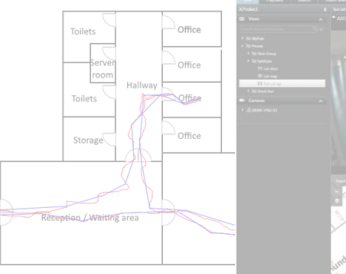
**SAFE CARE**  
Integrated cyber-physical security for health services

# The role of each tool – Cyber security solutions

E-Health digital transformation systems  
 Cyber threat monitoring system

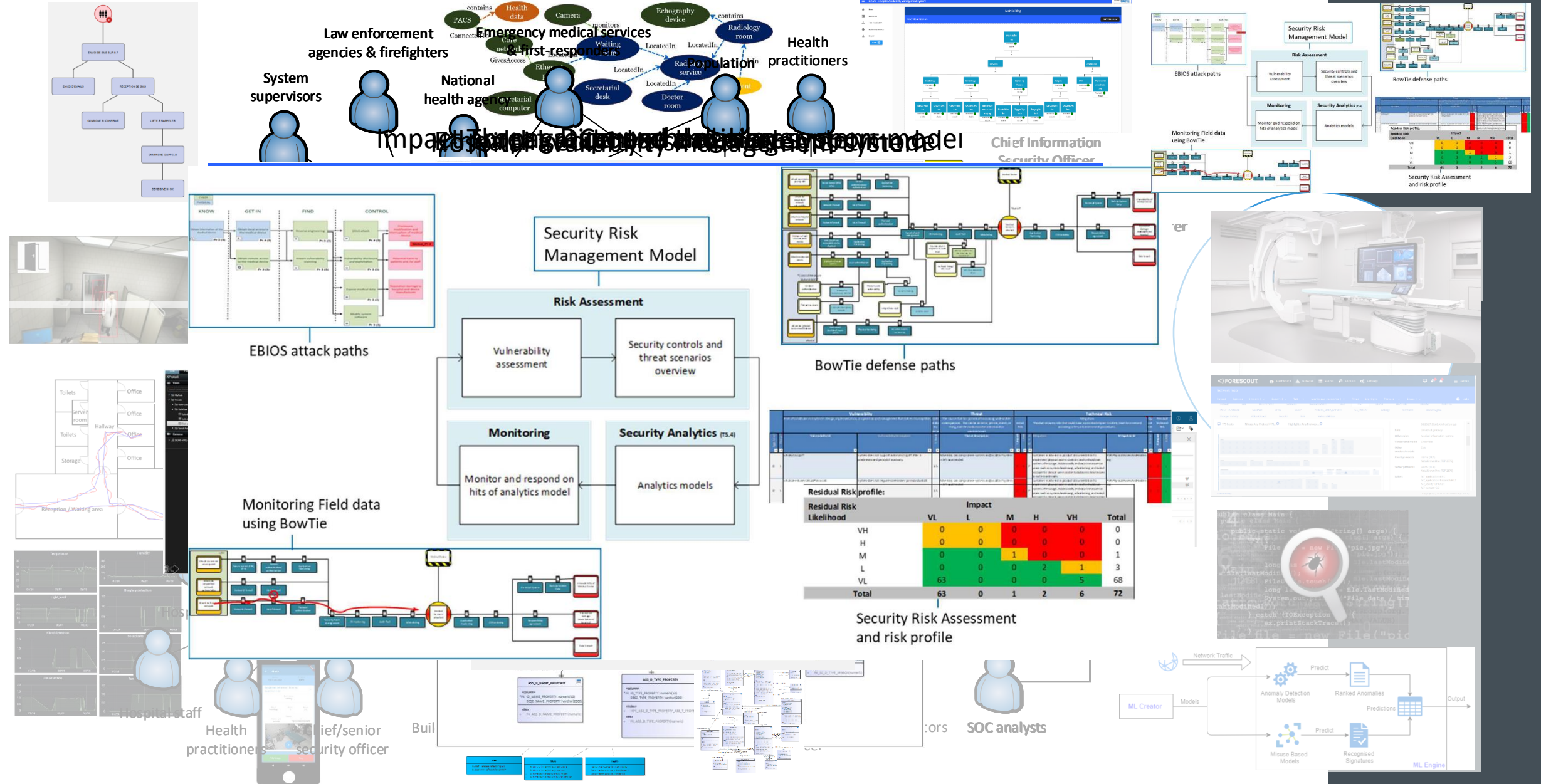
Severity	Status	Identifier	Last Update	Title	Operators	Detector
High	Opened	01E58RCRW784TC9C9BZKEC2J	29d 3h	Malware detected	newgraylog1	
Medium	Opened	01E54VJK3K9NGR2KAB8QIES7T	40d 16h	Network scan	newgraylog1	
High	Opened	01E545PP673FMHMDGT0Y5RP7	40d 16h	Attempted Administrator Privilege Gain	newgraylog1	
Medium	Opened	01E54SKY7J04TV6ZP29N1VBXP	40d 16h	Network scan	newgraylog1	
High	Opened	01E54QBKV5750K6M3HQQSF78	40d 17h	Attempted Administrator Privilege Gain	newgraylog1	
Medium	Opened	01E54QXMHFGOWFBDB603QZBQ	40d 17h	Network scan	newgraylog1	
High	Opened	01E54PG4K3TGB2AQ65XLRM5DE	40d 17h	Attempted Administrator Privilege Gain	newgraylog1	
Medium	Opened	01E54PEZRP9Q0MTEF4M6J3	40d 17h	Network scan	newgraylog1	
High	Opened	01EQH704LY3290LKH7VDDW2HC	00d 17h	Malware detected	newgraylog1	

curer



# The role of each tool – Integrated cyber-physical solutions



**SAFECARE**

*Integrated cyber-physical security for health services*

<https://www.safecare-project.eu/> 

@SafecareP 

SAFECARE Project 

David Lancelin

Project Manager at AIRBUS CYBERSECURITY

[david.lancelin@airbus.com](mailto:david.lancelin@airbus.com)